



"We are like a judge confronted by a defendant who declines to answer, and we must determine the truth from the circumstantial evidence."

— Alfred Wegener

Inside this issue:

NEW LUNCH VENUE! 2

Midland College
3600 N. Garfield
Carrasco Room

PBS-SEPM February Luncheon, Speaker: Dr. Robert Lindsay (Lindsay Consulting LLC), Title: Rock-Based Integrated Reservoir Characterization

PBS-SEPM Publication: 3
NEW Carbonate Well Log & Core Data Analysis Spreadsheet v. 4.0 (\$40)

Rock-Based Integrated Reservoir Characterization Core Workshop and Short Course, Dr. Robert Lindsay; March 15-17 @ C.E.E.D. (\$500); 8am-5pm daily

PBS-SEPM Publication: 5
Digital Publication Project DVD order form

PBS-SEPM Executive Board 6
2016-2017

Individual Sponsors 7
About PBS-SEPM

PBS-SEPM NEWSLETTER



January 2017

President's Column

There certainly seems to be an increasing focus on the Permian Basin by the oil and gas industry of late. Rig count has been increasing, several major acquisitions have been announced, and operators and service companies alike are looking at West Texas and Southeast New Mexico with a renewed sense of optimism. As experienced personnel new to the basin and inexperienced hires new to the industry make the Permian Basin and Midland their home, PBS-SEPM has a tremendous opportunity and responsibility to help educate those within our sphere of influence. But for PBS-SEPM to effectively meet these growing educational needs, it requires your help.

How can you help, you ask?

First, spread the word about PBS-SEPM. Pass on to newcomers the names and contact information of the Board members and the society. Forward them our digital Newsletter, or print it out and hand them a copy. Show them the PBS-SEPM publications in your personal library. Direct them to our website so they can learn more about our purpose, our rich heritage, and the resources we have available—such as our Digital Publications on

DVD. Every member can help with this essential step of increasing others' awareness of PBS-SEPM and what it offers.

Second, personally invite newcomers to join PBS-SEPM activities. Encourage those new faces you see to attend our monthly luncheon meetings. Better still, bring them with you to the meetings and introduce them to other geoscience professionals. Hand them a registration form for our upcoming short course on Rock-Based Integrated Reservoir Characterization Core Workshop in March. Ask them to consider participating in our upcoming Young Professional Field Trip in June.

Third, get involved. PBS-SEPM has thrived for the past 63 years and been an excellent resource to others because of members who not only believed in the mission of the society but personally ensured its success through volunteerism. Some wrote publications or gave luncheon talks. Others presented short courses, taught core workshops, or led field trips. Some served visibly as leaders, while others served quietly in the background on committees. No matter the role, the continued excel-

lence and relevance of PBS-SEPM educational opportunities both then and now requires members' involvement.

So I ask: How will you partner with PBS-SEPM to impact the next generation of geoscientists? How will you join with those who have come before you and carry the torch of PBS-SEPM forward? With elections coming soon, followed by a new Board, new committees, and new opportunities to make a difference, there is never a better time than now to decide your role.

Our next luncheon meeting is on February 21, 2017, in the Carrasco Room of Midland College. As always, I look forward to seeing you at our luncheon meeting, and again encourage you to reach out to your co-workers and professional network and invite them to join you.

Cory L. Hoffman
PBS-SEPM President
2016-2017

Web: <http://www.pbs-sepm.org>
E-Mail: info@pbs-sepm.org
Phone: (432) 279-1360
Mailing Address:
P.O. Box 6054
Midland, TX 79704

Mark Your Calendars! [PBS-SEPM luncheons at Carrasco Room, Midland College]

FEBRUARY 2017

- 14: Happy Valentine's Day!
- 14: WTGS Luncheon: (11:30am-1pm) Speaker: Dr. Sumit Verma, UTPB, Title: Estimation of TOC and Brittleness Volumes and Correlation with Reservoir Production
- 21: PBS-SEPM Luncheon: (11:30am-1pm) Speaker: Dr.

Robert Lindsay, Lindsay Consulting, LLC, Title: Rock-based Integrated Reservoir Characterization

- 22: WTGS: Delaware Basin Playmaker Forum

MARCH 2017

- 2: WTGS: Horizontals, Residual Oil, and Core Workshop
- 15-17: PBS-SEPM Short Course & Core Workshop: Rock-Based

Integrated Reservoir Characterization (Dr. Robert Lindsay)

- 21: PBS-SEPM Luncheon: (11:30am-1pm) Speaker: Dr. Susan Nash, TBA

APRIL 2017

- 18: PBS-SEPM Luncheon: (11:30am-1pm) Speaker: Scott Shelley, TBA

PBS-SEPM Luncheon Talk – February 21, 2017

Robert F. Lindsay, Ph.D.

“Rock-Based Integrated Reservoir Characterization: How to Describe a Core and How to Build a Sequence Stratigraphic Model”

Lindsay Consulting, LLC & Affiliated Faculty BYU

Tuesday February 21, 2017 - [Midland College, Carrasco Room](#), 11:30 a.m.

Abstract

Dr. Lindsay's talk will serve as an introduction to his 3 day short course March 15-17, and will discuss the techniques used to: 1) describe a core (or outcrop) in detail and 2) build a sequence stratigraphic model from the individual cycle scale to the composite sequence scale (flow unit to reservoir scale). Far from an academic exercise, rock-based integrated reservoir characterization is an essential technique for geologists and engineers to employ in order to better understand conventional reservoirs. This talk and associated short course will only address the first two parts of a five part training course that he developed while at Saudi Aramco that draws upon decades of experience working and describing carbonate reservoirs from the Permian Basin to the Middle East.

Biography



Robert (Bob) Lindsay was born and raised in Utah, and served in the U.S. Army Special Forces (“The Green Berets”). Bob received a B.S. Geology from Weber State College (1974), a M.S. Geology from Brigham Young University (1976), and a Ph.D. from the University of Aberdeen (2014). He began his career with Gulf Oil (1976-1985) where he worked production geology, enhanced oil recovery, and applied research. After Gulf Oil was acquired by Chevron, he continued with Chevron in various roles—carbonate petrographer, laboratory supervisor, stratigrapher, and carbonate specialist. In 2002, Bob left Chevron and joined Saudi Aramco where he worked until his retirement in 2015. At Saudi Aramco, he ultimately became a Senior Geological Consultant in their Geological Technical Services Division specializing in carbonate sedimentology and sequence stratigraphy.

Bob has published 104 abstracts and papers, has led multiple field trips, and has a history of service within several geological societies. Some notable areas of service include: Editor for the Oklahoma City Geological Society (1980-82), Co-Chairman and Chairman SEPM Evaporite Research Group (1984-86), AAPG Distinguished Lecturer (1993-94), President PBS-SEPM (1994-95), President WTGS (2000-01), Executive Committee Member Dhahran Geoscience Society (2005-07), and Distinguished Lecturer Dhahran Geoscience Society (2013-14).

“An education isn't how much you have committed to memory, or even how much you know. It's being able to differentiate between what you do know and what you don't.”

“Chance favors the prepared mind.”

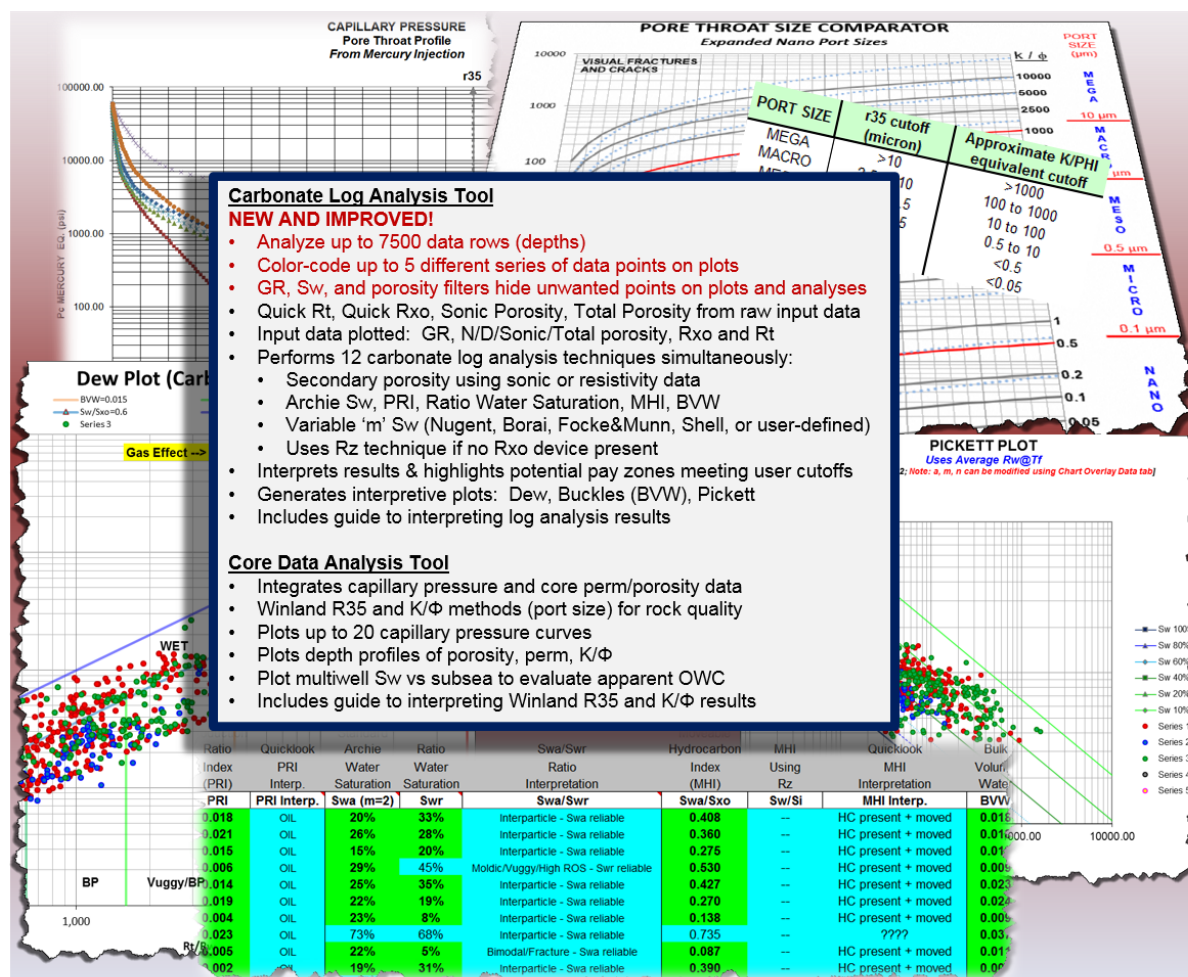
- Louis Pasteur
(1822-95)
French chemist and bacteriologist.



PBS-SEPM Publication

Carbonate Log Analysis Spreadsheet v. 4.0

By: Cory L. Hoffman
Designed for Microsoft Office Excel 2013



INTRODUCTORY PRICE: \$40 (all proceeds go directly to PBS-SEPM)

- Get 2 tools for 1 low price — spreadsheet includes carbonate log analysis AND core data analysis tools
- Flash drive contains current version (Excel 2013; v. 4.0) and previous version (Excel 2010; v. 3.2) of spreadsheet
- Price includes free upgrades within version class (v. 3, v.4, etc.) for each registered user

Quantity: _____ Total: \$ _____ (plus 8.25% sales tax; add \$5 for shipping/handling if mailing required)

Name: _____ Company/Affiliation: _____

Mailing Address: _____

Business Phone: _____ Fax: _____ Email: _____

Payment: check, cash or credit card

() I authorize you to charge the above (plus shipping if applicable) to my:

() MasterCard () VISA () American Express Exp. Date: _____

Card number: _____ Signature: _____

Make checks payable to PBS-SEPM.

Please send registration and payment information: PBS-SEPM, P.O. Box 6054, Midland, TX 79704

For additional information contact: PBS-SEPM office (432) 279-1360 or info@pbs-sepm.org.



**PBS-SEPM
CORE WORKSHOP & SHORT COURSE**



**ROCK-BASED INTEGRATED
RESERVOIR CHARACTERIZATION:
PART 1: HOW TO DESCRIBE A CORE &
PART 2: HOW TO BUILD A SEQUENCE STRATIGRAPHIC MODEL**

Presented By: Dr. Robert F. Lindsay

WHEN: March 15-17, 2017, 8am-5pm Daily

WHERE: CEED (1310 FM1788, Midland, TX 79707)

COST: \$500 members, \$550 non-members (Limited to 20)

WHAT'S PROVIDED:

All Supplies (incl. hand lenses), Handouts,
LUNCH, Snacks & Beverages



REGISTER BY:

March 10, 2017

DESCRIPTION:

This course will provide the participants with a direct and detailed classroom experience in learning the techniques used to: 1) describe a core (or outcrop) in detail, with hands on exercises involving core from the Grayburg Formation in a producing field in the Permian Basin; and 2) build a sequence stratigraphic model from the individual cycle scale to the composite sequence scale (flow unit to reservoir scale). This workshop/short course represents the first two parts of a larger five part course developed by Dr. Robert F. Lindsay that draws upon decades of experience working and describing carbonate reservoirs from the Permian Basin to the Middle East for companies such as Chevron and Saudi Aramco. Lessons learned will help geologists/engineers better understand and characterize conventional reservoirs. The course will answer the following questions and more: "Why is this useful?", "Isn't this an academic exercise?", and most important – "How will my company benefit from this kind of work?"

WHO SHOULD TAKE THE COURSE: Geologists, Geophysicists, and Engineers.

REGISTER: Online @ WWW.PBS-SEPM.ORG or Mail:

First Name: _____ Last Name: _____

Company: _____ Position: _____

Address: _____

City: _____ State: _____ Zip: _____

Telephone #: (____) ____ - _____

Email: _____

Check #: _____ Dollar Amount: \$ _____ OR

Credit Card: VISA () MasterCard () Discover () American Express ()

PBS-SEPM Publications



PBS-SEPM Symposia And Core Workshops on 3 DVDs



This is your opportunity to have the entire PBS-SEPM publication library (1955 – 2007) at your finger tips. There is a fully searchable Table of Contents—find a topic or author just by typing in the word(s). All publications are in Adobe PDF with all major articles being bookmarked, and all the figures are linked in the text for quick reference. Those areas that are off limits to geologists like the Glass Mountains or Sierra Diablos have been written up in these publications. Numerous out-of-print publications and figures and/or plates not published in the original guidebooks are now available in this library.

This includes all publications, even the special publications and coveted core workshops. Can you imagine the hidden treasures you might find? Here is your chance to uncover them in this special three (3) DVD set. *Buy one or all.*

DVD I - Symposiums & Guidebooks (1955-1989)

Member- **\$75.00** plus 8.25% tax and \$5.00 shipping and handling

Non-Member- **\$100.00** plus 8.25% tax and \$5.00 shipping and handling

DVD II - Symposiums & Guidebooks (1990-2007)

Member- **\$75.00** plus 8.25% tax and \$5.00 shipping and handling

Non-Member- **\$100.00** plus 8.25% tax and \$5.00 shipping and handling

DVD III - Core Workshops (82, 83, 85, 98) & Special Publications (A, 88-28, 96-39, 84)

Member- **\$75.00** plus 8.25% tax and \$5.00 shipping and handling

Non-Member- **\$100.00** plus 8.25% tax and \$5.00 shipping and handling

Entire Set of three DVDs

Member Price **\$200.00** plus 8.25% tax and \$5.00 shipping and handling

Non-Member Price **\$250.00** plus 8.25% tax and \$5.00 shipping and handling

Name: _____ **Company/Affiliation:** _____

Mailing Address: _____

Business Phone: _____ **Fax:** _____ **Email:** _____

Payment: check, cash or credit card

() I authorize you to charge the above to my:

() MasterCard () VISA () American Express Exp. Date: _____

Card number: _____ **Signature:** _____

Make checks payable to **PBS-SEPM**.

Please send registration and payment information: PBS-SEPM, P.O. Box 6054, Midland, TX 79704

For additional information **contact: PBS-SEPM office** (432) 279-1360 or info@pbs-sepm.org.

PBS-SEPM Executive Board (2016-2017)

President:	Cory L. Hoffman, Ph.D.	choffman@sm-energy.com
President-Elect:	James Hawkins	geo_hawk@att.net
First Vice President:	Norman E. Frances	nfrances@mcclureoil.com
Second Vice President:	Curtis Helms Jr.	chelms@midland.edu
Treasurer:	Brice Otto	botto@sm-energy.com
Secretary:	Bryce Swinford	bswinford@concho.com
Previous President:	John Leone	jleone@arcoperating.com
Board Advisor:	TBD	

Do you have an idea for an interesting luncheon talk? Have a core workshop you'd like to present? Have some suggestions on how PBS-SEPM can better serve the geologic community? Just click on the e-mail above & drop us a note, your PBS-SEPM Executive Board wants to hear from you!

"Science is facts; just as houses are made of stone, so is science made of facts; but a pile of stones is not a house, and a collection of facts is not necessarily science."

- Jules Henri Poincaré
(1854-1912)
French mathematician

Corporate Sponsorships (2016-2017)

Your Company Logo could be in this space showing your support of PBS-SEPM.

Your support lifts your corporate name within the Permian Basin.



PBS-SEPM is grateful for the generosity of these fine corporate sponsors !

"No one is useless in this world who lightens the burden of it for someone else"

- Benjamin Franklin

If you are interested in a sponsorship opportunity, please call PBS-SEPM for more details at (432) 279-1360 or e-mail info@pbs-sepm.org.



PBS-SEPM
P.O. Box 6054
Midland, TX 79704

Phone: 432-279-1360
Fax: 432-683-8739
Email: info@pbs-sepm.org

We're on the Web!
www.pbs-sepm.org

“..In reply, I can only plead that a discovery which seems to contradict the general tenor of previous investigations is naturally received with much hesitation.”

*[Charles Lyell](#),
British Lawyer, Geologist,
(1797 - 1875)*

PBS-SEPM is the Permian Basin Section of SEPM—the Society for Sedimentary Geology. However, you do not need to be a SEPM member or a geologist to join PBS-SEPM.

Our non-profit society relies entirely upon the efforts of dedicated volunteers to serve the geological community—primarily through educational events. These events include monthly luncheon talks, core workshops, annual field trips, and special geological publications. Additionally, we are involved on the college campuses—reaching out to future earth scientists through scholarships, discounted memberships, and offering full-time geology students the ability to participate in professional-grade field trips at little to no cost.

If you would like to join PBS-SEPM, you may visit our updated website (www.pbs-sepm.org) to learn more about us, download or fill out a membership form, and learn how to get involved.

Individual Sponsors of PBS-SEPM (2016-2017)

Individual sponsors are advertised on the PBS-SEPM website and each Newsletter. Cost is \$85/year. If you are interested in a sponsorship opportunity, please call PBS-SEPM for more details at (432) 279-1360 or e-mail info@pbs-sepm.org.

FHB STRATIGRAPHIC SERVICES

RESERVOIR CHARACTERIZATION

FRED H. BEHNKEN.
FHB12.93@GMAIL.COM

4811 ELMA DRIVE
MIDLAND, TX 79707-5251

432-212-1496 (C)



Paul Burns
Senior Technical Sales

Mud Logging – Geosteering – Geochemical Analysis

West Texas Divisional Office: 3602 E State Highway 158, Midland, TX 79706

Cell: 432-528-1871

E-mail: paulburns@dwl-usa.com

New Orleans · West/South Texas · Houston · Dallas · Appalachian

“Volunteering is an excellent way to provide meaning in your life and help give back to your local community.”

Peter Muggeridge

Cover Inset Photo: “Turnip Rock” Marshall Sandstone (Port Austin, MI; Joe Braun Photography)