



PBS-SEPM NEWSLETTER



NOVEMBER 2008

Special points of interest:

- November PBS-SEPM Luncheon Talk by **Sandeep Mukherjee**.
- Spring 2009 New-Hire Field Trip (March 5-8th)

Inside this issue:

2008-09 PBS-SEPM Executive Board 2

Corporate Sponsors '08 - '09 2

November Luncheon Talk — Sandeep Mukherjee 3

PBS-SEPM Digital Publication Project DVD order 4

PBS-SEPM 2009 West Texas Calendar Order Form 5

PBS-SEPM Spring 2009 New-Hire Field Trip 6

AAPG SW Section Short Course 7

President's Column

As I write this column, NYMEX Crude Oil is down another \$27 from last month—around \$61/bbl. What a dramatic change! A few short months ago many were wondering if oil prices would ever cease their steady climb, and now many find themselves hoping oil prices will stop their precipitous decent and stabilize. Indeed, the wisdom of those who have come before me has been borne out—oil prices are indeed cyclic (and defy prediction!).

Nonetheless, whether in a high oil price environment or low, geoscience professionals are in need of continual training to execute their challenging craft with innovation and excellence. In light of this, I wanted to extend a special thanks to Lyn Canter who led an insightful and educational core workshop for us last month on the Ellenburger Group in the Val Verde Basin. Not only did we have a great turnout, but we had a good mix of geologists from the industry as well as from nearby colleges (Texas Tech and

UTPB). The society even gained several new members as well. Thanks, Lyn, for volunteering your time and talent on behalf of PBS-SEPM!

As you look through the Newsletter, I wanted to be sure to highlight our upcoming Spring 2009 New Hire field trip. After the overwhelmingly positive response to our 2008 Summer Intern / New Hire field trip, it became obvious to PBS-SEPM that a serious need existed in our geologic community for a field trip focused on training inexperienced new hires. As such, we are working once again with Dr. Bob Trentham, Dr. Emily Stoudt, Robert Campbell, and Chris Fling to make such a training opportunity available to you. So spread the word, circle March 5-8th on your calendars, and be on the lookout for registration forms coming out next month.

I'm also excited to let you know that the new and improved, professionally printed PBS-SEPM 2009 'West Texas' Calendars

will be available for sale at our PBS-SEPM November luncheon meeting on the 18th. I've seen the preview of the calendars and they look absolutely fantastic! There will only be a limited supply of these calendars, and at \$15 apiece they should go fast—so be sure to get your orders in early.

With Thanksgiving approaching, our thoughts gravitate to all we are thankful for—our country, families, friends, careers, etc. As President of PBS-SEPM, I am thankful for the small army of dedicated volunteers that allow us to run so smoothly and serve the geologic community so effectively. It is a privilege to work with each of you. Thank you, PBS-SEPM volunteers!

I hope each of you has a Happy Thanksgiving!

Cory L. Hoffman, Ph.D., P.G.

President PBS-SEPM 2008-2009

<http://www.pbs-sepm.org>

Mark Your Calendars!

NOVEMBER

- **18: PBS-SEPM** Luncheon Talk featuring Sandeep Mukherjee (*Schlumberger*) "Geologic Boundary Detection PeriscopeIM: A new Frontier in Geo-

steering Horizontal Wells" (Midland Center; 11:30-1:00 PM)

DECEMBER

- **NOTE:** No PBS-SEPM Luncheon Meeting
- **8:** AAPG SW Section

- Short Course: Abilene
- **9:** AAPG SW Section Short Course: Fort Worth

JANUARY

- **20: PBS-SEPM** Luncheon: TBA (Midland Center; 11:30-1:00 PM)

PBS-SEPM Executive Board (2008-2009)

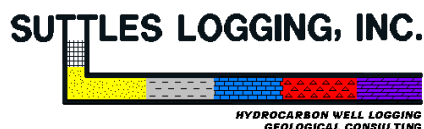
President:	Cory L. Hoffman	choffman@stmaryland.com
President Elect:	Fred Behnken	Fred_Behnken@kindermorgan.com
First Vice President:	Hollie Lamb	h.lamb@eaglerockenergy.com
Second Vice President:	Teri McGuigan	tmcguigan1@suddenlink.net
Treasurer:	Deb S. Gann	Debbie.Gann@arcadis-us.com
Secretary:	James L. Hawkins	jhawkins@midland.oilfield.slb.com
Executive Director:	Paula Mitchell	wtgs@wtgs.org

Do you have an idea for an interesting luncheon talk? Have a core workshop you'd like to present? Have some suggestions on how PBS-SEPM can better serve the geologic community? Just click on the e-mail above and drop us a note—your PBS-SEPM Executive Board would love to hear from you!



Corporate Sponsorships (2008-2009)

If you are interested in a sponsorship opportunity, please call Paula Mitchell for more details at (432) 683-1573.



Wagner & Brown, Ltd.



"The Company That Lives By Its Name!"



**PBS-SEPM is
grateful for the
generosity of
these fine
corporate
sponsors !**

PBS-SEPM Luncheon Talk: November 18th

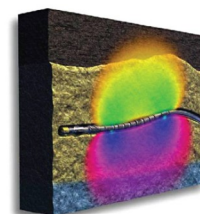
TITLE: Gologic Boundary Detection with Periscope™: A new Frontier in Geo-steering Horizontal Wells

SPEAKER: Sandeep Mukherjee (Borehole Geologist/Well Placement Engineer, Data & Consulting Services, Schlumberger, Midland)

ABSTRACT

Horizontal well placement is one of the key techniques of recent times to maximize reservoir exploitation in today's oilfield. Although it is a popular technique, horizontal well placement has always offered challenges to oil and gas operators owing to the complexity of reservoir geometry. Introduction of the LWD Periscope™ tool by Schlumberger has been a major breakthrough in solving this problem. The combination of real-time measurement coupled with real-time interpretation facilitates formation boundary detection, allowing proactive geo-steering in the target formation. Periscope™ is a resistivity based tool that generates conventional and directional resistivity measurements azimuthally around the wellbore. These measurements are inverted in real-time, to resolve distance to the top and bottom of the target layer from the well path up to 15 feet away.

Periscope™ has been successfully used for navigation beneath caprock, water detection and avoidance, chasing heterogeneous and discontinuous reservoirs, precise well placement into reservoir "sweetspots", and 3-D structure recognition, as well as simply increasing "in-zone footage" in critical wells. Periscope™ has given numerous operators worldwide access to reserves previously considered economically marginal. In continental United States, Periscope™ has successfully been used in drilling horizontal well in San Juan Basin, NM, in Williston Basin, ND, in Anadarko and Arkoma Basins, OK, to the Bone Springs Formation in the Permian Basin, TX. In Permian Basin, real-time geo-steering with Periscope™ coupled with PowerDrive rotary steerable systems, has given operators a chance to maximize reservoir exposure, minimized drilling time and has increased the chances for better of reservoir stimulation. Finally the Periscope™ answer products can successfully be integrated with other drilling, geologic and production data for better reservoir characterization, drilling optimization, and enhanced completions.



"Resistivity based tool that generates conventional and directional resistivity measurements azimuthally around the wellbore."

BIOGRAPHY: Sandeep Mukherjee

Sandeep Mukherjee is geologist working with Schlumberger Data and Consulting Services. His areas of expertise are interpreting borehole images and steering horizontal wells. He earned his Bachelors in Geology from University of Calcutta in 2000, and his Masters in Geology from University of Minnesota in 2006. Sandeep joined Schlumberger in 2006 as a Borehole Geologist, helping oilfield operators find geologic solutions using dipmeter and image logs. Starting in early 2008, Sandeep has also been working as a well placement engineer, steering horizontal wells with Schlumberger's Periscope™ tool. He is a member of AAPG, AGU, GSA, WTGS and PBS-SEPM.

WHEN: Tuesday, November 18, 2008

WHERE: Midland Center

TIME: 11:30-1:00 PM

PBS-SEPM Digital Publication Project



PBS-SEPM Publications ORDER FORM



This is your opportunity to have the entire PBS-SEPM publication library (1955 – 2007) at your finger tips. There is a fully searchable Table of Contents—find a topic or author just by typing in the word(s). All publications are in Adobe PDF with all major articles being bookmarked, and all the figures are linked in the text for quick reference. Those areas that are off limits to geologists like the Glass Mountains or Sierra Diablos have been written up in these publications. Numerous out-of-print publications and figures and/or plates not published in the original guidebooks are now available in this library.

This includes all publications, even the special publications and coveted core workshops. Can you imagine the hidden treasures you might find? Here is your chance to uncover them in this special three (3) DVD set. *Buy one or all.*

DVD I - Symposiums & Guidebooks (1955-1989)

Member- \$75.00 plus 8.25% tax and \$5.00 shipping and handling

Non-Member- \$100.00 plus 8.25% tax and \$5.00 shipping and handling

DVD II - Symposiums & Guidebooks (1990-2007)

Member- \$75.00 plus 8.25% tax and \$5.00 shipping and handling

Non-Member- \$100.00 plus 8.25% tax and \$5.00 shipping and handling

DVD III - Core Workshops (82, 83, 85, 98) & Special Publications (A, 88-28, 96-39, 84)

Member- \$75.00 plus 8.25% tax and \$5.00 shipping and handling

Non-Member- \$100.00 plus 8.25% tax and \$5.00 shipping and handling

Entire Set of three DVDs

Member Price \$200.00 plus 8.25% tax and \$5.00 shipping and handling

Non-Member Price \$250.00 plus 8.25% tax and \$5.00 shipping and handling

Name: _____ **Company/Affiliation:** _____

Mailing Address: _____

Business Phone: _____ **Fax:** _____ **Email:** _____

Payment: check, cash or credit card

() I authorize you to charge the above to my:

() MasterCard () VISA () American Express Exp. Date: _____

Card number: _____ **Signature:** _____

Make checks payable to **PBS-SEPM**.

Please send registration and payment information: PBS-SEPM, P.O. Box 1595, Midland, Texas 79702

For additional information **contact:** PBS-SEPM office (432) 683-1573.

PBS-SEPM 'West Texas' 2009 Calendar



PBS-SEPM 'West Texas' 2009 Calendar PRE-ORDER FORM



This is our second year to offer this stunning 8.5x11" (folds out to 11x17") calendar, and we have taken your suggestions and improved upon this popular item. **Professionally printed** with heavier paper and vibrant colors are but a few of the enhancements, and yet you can purchase these calendars for the same bargain price of \$15 each! We are even offering a special volume discount of 'buy 5 calendars, get 1 free'! **Why wait?**

Featuring breathtaking West Texas scenery, icons of the oil patch, fossils, and minerals, this calendar is sure to be attractive hanging in your home or office. Keep them for yourself or give them away as gifts to your valued customers, partners, and employees! **Available for pickup in November 2008.**

Not only does each calendar purchase support the educational programs of PBS-SEPM, a non-profit organization, but a percentage of the calendar sales is dedicated to provide financial aid to full-time college students (geoscience majors) wanting to attend PBS-SEPM sponsored events. So each dollar spent not only helps PBS-SEPM continue to serve the professional geologic community with excellence, but also is an investment in the lives of future geosciences professionals as well.

Fill out the form below to pre-order your PBS-SEPM 'West Texas' 2009 Calendars today!

Pre-Order Your PBS-SEPM 'West Texas' 2009 Calendar:

Member/Non-Member Price: **\$15.00** plus \$3.00 shipping and handling per calendar

Special Volume Discount: **'Buy 5, get 1 free'** [6 calendars for \$75.00 plus \$4.00 shipping & handling per bundle of 6]

QUANTITY: _____ **Will pick up calendar(s) at WTGS Office (Y/N)?** _____

Sub-Total: \$ _____

SHIPPING: \$ _____ [N/A if picking up at WTGS office; otherwise \$3.00 per calendar or \$4.00 per bundle of 6]

TOTAL: \$ _____

Name: _____ **Company/Affiliation:** _____

Mailing Address: _____

Business Phone: _____ **Fax:** _____ **Email:** _____

Payment: check, cash or credit card

() I authorize you to charge the above to my:

() MasterCard () VISA () American Express Exp. Date: _____

Card number: _____ **Signature:** _____

Make checks payable to **PBS-SEPM**.

Credit card orders may be faxed to (432) 686-7827.

Order forms/payment may be mailed to: PBS-SEPM, P.O. Box 1595, Midland, Texas 79702. Phone (432) 683-1573.



PBS-SEPM
P.O. Box 1595
Midland, TX 79702
Phone: 432-683-1573
Fax: 432-686-7827
E-mail: wtgs@wtgs.org

We're on the Web!
www.pbs-sepm.org

Society for Sedimentary Geology

PBS-SEPM is the Permian Basin Section of SEPM—the Society for Sedimentary Geology. However, you do not need to be a SEPM member or a geologist to join PBS-SEPM.

Our non-profit society relies upon the efforts of dedicated volunteers to serve the geological community—primarily through educational events. These events include monthly luncheon talks, core workshops, annual field trips, and special geological publications. Additionally, we are involved on the college campuses—reaching out to future earth scientists through scholarships, discounted memberships, and offering full-time geology students the ability to participate in professional-grade field trips at little to no cost.

If you would like to join PBS-SEPM, you may visit our website (www.pbs-sepm.org) to learn more about us, download a membership form, and learn how to get involved.

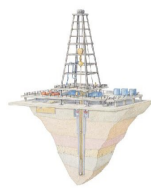
Upcoming New Hire Field Trip!!!! March 5th-8th, 2009

A PBS-SEPM Field Course designed for new hire Geology, Engineering, and Land Professionals .

This field course is specifically designed for those with 0 to 5 years of Permian Basin experience, and is pertinent to all disciplines (geology, land/leasing, engineering). While the geology and history of the Permian Basin will certainly be emphasized both at the outcrop and in the classroom, field exercises and breakout sessions will draw upon all disciplines to solve various 'real world' problems associated with the oilfield. It is this multidisciplinary focus and integrated approach that makes this course such a unique and effective training opportunity.

A 4 day field trip: March 5th thru 8th, 2009.

Led by Dr. Emily Stoudt (geologist), Dr. Bob Trentham (geologist), Robert Campbell (reservoir engineer), and Chris Fling (landman).



- Plan now and develop a team of people that can help bring your company into the future!
- Sponsorship and Registration beginning in December.
- Plan ahead and book soon!

COMING SOON: Details on next year's Summer Intern Field Trip!



**Southwest Section
American Association of Petroleum Geologists
Presents the 2008 Bill Hailey Memorial Short Course**

Integrated Approaches to Modeling Late Paleozoic
Petroleum Reservoirs in the Greater Midcontinent
By Dr. Lynn Watney

Monday, December 8, 2008
Hardin-Simmons University
Johnson Building
Ambler & Cedar Streets, north Abilene

OR

Tuesday, December 9, 2008
Auditorium,
Brown-Lupton University Union
Texas Christian University

Registration at 8:00 – 9:00 am
Morning Program 9:00 – Noon
Afternoon program 12:45 – 4:45 pm
Space is limited, please pre-register!

Name of participant: _____ Phone # _____

SWS-AAPG Member continental breakfast and luncheon (course is free).....\$15 _____
SWS-AAPG Member, course only, no food.....Free _____
Non-Member Pre-registration, includes breakfast and luncheon.....\$30 _____

For Abilene Course, Mail to:
Abilene Geological Society
P. O. Box 974
Abilene, TX. 79801

For Fort Worth Course, Mail to:
TCU Energy Institute
Box 298965
Texas Christian University
Fort Worth, TX. 76129

See SWS AAPG website (www.southwestsection.org) for Abstract of Short Course.